

NEW NEWYDD '24

CBCDC Caerdydd
RWCMD Cardiff
24-31 Mai | May

Young Vic Theatre
London
5-14 Meh | June

Couple Goals

gan | by **Rhiannon Boyle**
Eva Sampson cyfarwyddwr | director

Mewn cydweithrediad â | In collaboration with
SHERMAN THEATRE

Dissonance

gan | by **Paula B Stanic**
Anastasia Osei-Kuffour
cyfarwyddwr | director

Mewn cydweithrediad â | In collaboration with
PAINES PLOUGH

Falling Falling Falling Falling

gan | by **Simon Longman**
Andrew Whyment cyfarwyddwr | director

The Glue

gan | by **Isley Lynn**
Debbie Hannan cyfarwyddwr | director



ROYAL WELSH COLLEGE
OF MUSIC & DRAMA
COLEG BRENHINOL
CERDD A DRAMA CYMRU



WWW.RWCMD.AC.UK

Mae hwn yn dymor arbennig, wrth i ni ddathlu deng mlynedd o greu gwaith heriol ac ysbrydoledig, a dechrau partneriaeth newydd gyda'r Young Vic.

Bob blwyddyn mae ein gŵyl ysgrifennu newydd yn comisiynu pedair drama sy'n adlewyrchu amrywiaeth o adrodd straeon cyfoes, gan awduron sefydledig, yn gweithio gyda chyfarwyddwyr proffesiynol a Chwmni Richard Burton y Coleg, sy'n cynnwys myfyrwyr drama yn eu blwyddyn olaf.

Mae NEWYDD '24 yn dod â rhai o dalentau creadigol gorau'r DU ynghyd: Simon Longman yn gweithio gyda'r cyfarwyddwr Andrew Whyment, Isley Lynn gyda Debbie Hannan, Paula B. Stanic gyda'r cyfarwyddwr Anastasia Osei-Kuffour, mewn cydweithrediad â Paines Plough, a Rhiannon Boyle a'r cyfarwyddwr Eve Sampson, mewn cydweithrediad â Theatr y Sherman. Fel rhan o rôl barhaus y Coleg yn meithrin gwaith gwreiddiol a dod â naratifau amrywiol i'r llwyfan, y llynedd gwnaethom lansio 'Lleisiau Newydd', yn arddangos gwneuthurwyr theatr y dyfodol gyda gwaith gan fyfyrwyr presennol.

Rwy'n arbennig o falch o'n hymrwymiad i waith newydd a'r ffaith bod NEWYDD yn parhau i hyrwyddo amrywiaeth ar draws ei dimau creadigol, ei brosiectau, a'i bynciau, gan helaethu lleisiau cwiar a lleiafrifol ar y llwyfan.

Diolch am eich cefnogaeth ac am fod yn rhan o'r tymor arbennig hwn.

Jonathan Munby
Cyfarwyddwr Perfformio (Drama)

This is a particularly special season, as we celebrate the 10th Anniversary of NEW and the beginning of a new partnership with the Young Vic.

Each year NEW commissions four plays from established writers, working with professional directors and the College's Richard Burton Company, made up of final year drama students, to create challenging and inspiring work that reflects the diversity of contemporary storytelling. It's been a 10 year commitment, nurturing original work and bringing diverse narratives to the stage, and last year we launched 'New Voices', showcasing future theatre-makers, with work by current students.

NEW'24 brings together some of the UK's top creative talent to deliver ambitious and thought-provoking new plays: Simon Longman working with director Andrew Whyment, Isley Lynn with Debbie Hannan, Paula B. Stanic with director Anastasia Osei-Kuffour, in collaboration with Paines Plough, and Rhiannon Boyle and director Eve Sampson, in collaboration with Sherman Theatre.

NEW continues to champion diversity across its creative teams, projects, and subjects, amplifying queer and minority voices on stage. I'm especially proud of our commitment to new work and the celebration of the next generation of theatre makers.

Thank you for your support and for being a part of this special season.

Jonathan Munby
Director of Performance (Drama)



EARTHQUAKES IN LONDON, LLUNI | PHOTO: SIMON GOUGH

Cefnogir drama yng Ngholeg Brenhinol Cerdd a Drama Cymru gan

Drama at the Royal Welsh College of Music & Drama is supported by

The Andrew Lloyd Webber Foundation
Arts & Business Cymru
Bad Wolf

Philip Carne MBE FRWCMD and Christine Carne FRWCMD
Professor Indira Carr
The Connect Fund
Samantha Maskrey
Richard Hughes
ITV Studios
The Leverhulme Trust
The Mackintosh Foundation
The Mosawi Foundation
Gregory Nasmyth and Hon. Samantha Rowe-Beddoe
S4C
Sean Mathias

The Simon Gibson Charitable Trust
Sir John Gielgud Charitable Trust
The late Jacqueline Skarvellis
The Spielman Charitable Trust
Sir Howard and Lady Jennifer Stringer
Peter and Janet Swinburn
Babs and Debs Thomas
The late Neil and Mary Webber
Catherine Zeta-Jones
CBE FRWCMD

Gan | By
Rhiannon Boyle

Cyfarwyddwr | Director
Eva Sampson

Cyfarwyddwr Llais | Voice Director
Emma Stevens Johnson

Cyfarwyddwr Agosatrwydd
Intimacy Director
Abigail Kessel

Cyfarwyddwr Ymladd
Combat Director
Kevin McCurdy

Mewn cydweithrediad
In collaboration with
SHERMAN THEATRE

Rheolwr Cynhyrchu
Production Manager
Dave Roxburgh

Goruchwylwyr Cynhyrchu
Production Supervisors
Tom Naylor & Fran Kirchholtes

Goruchwylwr Goleuo
Lighting Supervisor
Katy Morison

Goruchwylwr Sain | Sound Supervisor
Heddwyn Davies

Goruchwylwr Gwisg
Costume Supervisor
Jenn Jacobs-Evans

Goruchwylwr Cynllunio
Design Supervisor
Brad Lee

Tîm Cynhyrchu
Production Team

Cynllunydd Set
Set Designer
Xinping Wang

Cynllunydd Gwisg
Costume Designer
Maisie Frater

Cynllunydd Goleuo
Lighting Designer
Olivia Burlingame

Cynllunydd Sain
Sound Designer
Amy Tinniswood

Cyfansoddwr
Composer
Finn Heathfield

Rheolwr Llwyfan
Stage Manager
Laura Everett

Dirprwy Reolwr Llwyfan
Deputy Stage Manager
Phoebe Buckland

Is-Reolwyr Llwyfan
Assistant Stage Managers
Cerys John

Cyfathrebydd Cynllunio
Design Communicator
Dominic Shah

Cynorthwydd Cynllunio
Design Assistant
Nandita Parmar
Ahreum Song

Cynorthwydd Gwisg
Costume Assistant
Srishti Vaideeswaran

Cynorthwywyr Golygfaol
Scenic Assistants
Cerys Arrowsmith
Will Dean
Isabel Minnion Craggs
Dominic Shah

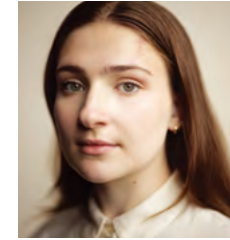
Adeiladu Golygfaol
Scenic Construction
Archie Adams
Reka Johns
Harry Lewis
Bea Massey
Katherine Towl



Chloe
Lizzie Caitlin Bennett



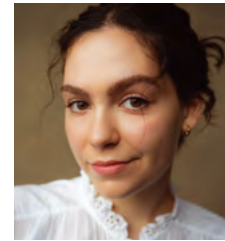
Andy
Joel David



Producer
Jessie Franks



Ed
Morgan Llewelyn-Jones



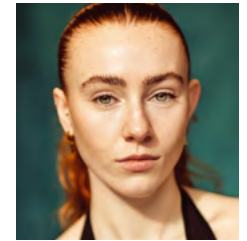
Lollie
Molly Marr-Johnson



Connor
Joe Reynolds



Dan
Noah Ritter



Melissa
Kate Wilson

Swing Technegydd
Tech Swing
Dougie Williams

Is-reolwr Llyfan/Tech
ASM/Tech
Amy Keogh
Alexander Prime

Diolch i
Thanks To

Theatr na nÓg

Gan | By
Paula B Stanic

Cyfarwyddwr | Director
Anastasia Osei-Kuffour

Cyfarwyddwr Llais | Voice Director
Rhian Cronshaw

Cyfarwyddwr Symudiad
Movement Director
Deborah Light

Cyfarwyddwr Ymladd
Combat Director
Kevin McCurdy

Mewn cydweithrediad â
In collaboration with
PAINES PLOUGH

Rheolwr Cynhyrchu
Production Manager
Dave Roxburgh

Goruchwylwyr Cynhyrchu
Production Supervisors
Tom Naylor & Fran Kirchholtes

Goruchwylwr Goleuo
Lighting Supervisor
Katy Morison

Goruchwylwr Sain | Sound Supervisor
Heddwyn Davies

Goruchwylwr Gwisg
Costume Supervisor
Jenn Jacobs-Evans

Goruchwylwr Cynllunio
Design Supervisor
Brad Lee

Tîm Cynhyrchu
Production Team

Cynllunydd Set a Gwisg
Set & Costume Designer
Jesse Musker

Cynllunydd Goleuo
Lighting Designer
Yasmin Alayoubi

Cynllunydd Sain
Sound Designer
Suzanna Candler

Cyfansoddwr
Composer
Callan Teare

Rheolwr Llwyfan
Stage Manager
Sophie Thomas

Dirprwy Reolwr Llwyfan
Deputy Stage Manager
Ginnie Tan Mui Len

Is-Reolwr Llwyfan
Assistant Stage Manager
Emma Lewis

Cyfathrebydd Cynllunio
Design Communicator
Will Dean

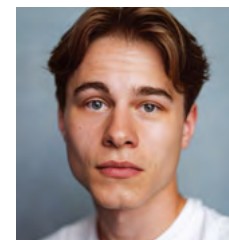
Cynorthwydd Cynllunio
Design Assistant
Jiamei Fu

Cynorthwydd Gwisg
Costume Assistant
Natalia Hamlin

Rheolwr Adeiladu
Construction Manager
Harry Hughes

Adeiladu Golygfaol
Scenic Construction
Archie Adams

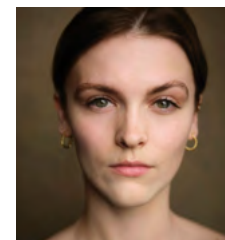
Reka Johns
Harry Lewis
Bea Massey
Katherine Towl



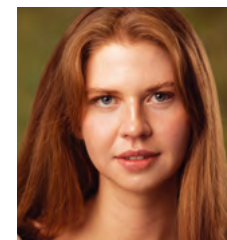
Kai Wheeler / DC Crosse /
Friend / Theo
Archie Christoph-Allen



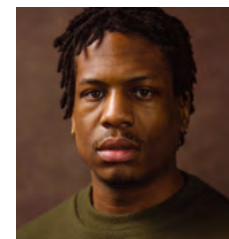
Jessie Martin /
DC Phillips / Officer
Blake Hopkins



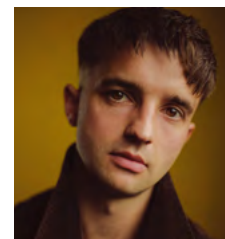
Phoenix
Rosalyn Jackson



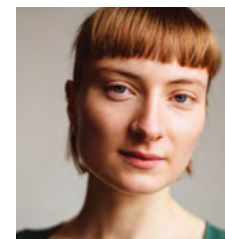
Sara Lou Hooper /
Marina
Rosalind Jackson Roe



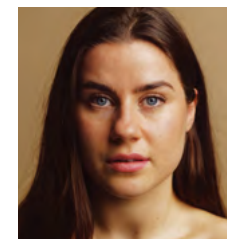
Sean Blake
Nathan Lwanga



Danny Adams / Cameron
James Mace



Luna Martin
Matilda McCarthy



Ashley (Ash) Byrne
Aoise Meaney

Artistiaid Golygfaol
Scenic Artists
Grace Rumsey
Amelia O'Toole
Theo Wyatt

Cynorthwyr Golygfaol
Scenic Assistants
Cerys Arrowsmith
Will Dean
Isabel Minnion Craggs
Dominic Shah

Swing Technegydd
Tech Swing
Archie White

Technegydd Lleoliad
Venue Technician
Cadi Davage
Technegydd Lleoliad
Cynorthwyl
Assistant Venue Technician
Danny Connaire

Is-reolwr Llyfan/Tech
ASM/Tech
Abbie Belsham
Ellie Smallbone

Gan | By
Simon Longman

Cyfarwyddwr | Director
Andrew Whyment

Cyfarwyddwr Llais | Voice Director
Alice White

Cyfarwyddwr Symudiad
Movement Director
Michael White

Rheolwr Cynhyrchu
Production Manager
Dave Roxburgh

Goruchwylwyr Cynhyrchu
Production Supervisors
Tom Naylor & Fran Kirchholtes

Goruchwylwr Goleuo
Lighting Supervisor
Katy Morison

Goruchwylwr Sain | Sound Supervisor
Heddwyn Davies

Goruchwylwr Gwisg
Costume Supervisor
Jenn Jacobs-Evans

Goruchwylwr Cynllunio
Design Supervisor
Brad Lee

Tim Cynhyrchu
Production Team

Cynllunydd Set a Gwisg
Set & Costume Designer
Ruizhi Naomi Zhang

Cynllunydd Goleuo
Lighting Designer
Olivia Burlingame

Cynllunydd Sain
Sound Designer
Amy Tinniswood

Cyfansoddwyr
Composers
Kieran Alford
Max Dickinson

Rheolwr Llwyfan
Stage Manager
Elizabeth Stuckey

Dirprwy Reolwr Llwyfan
Deputy Stage Manager
Mia Hunter

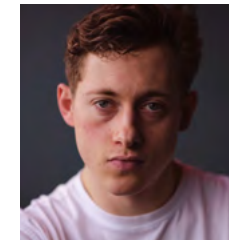
Is-Reolwr Llwyfan
Assistant Stage Manager
Charlie Hills

Cyfathrebydd Cynllunio
Design Communicator
Dominic Shah

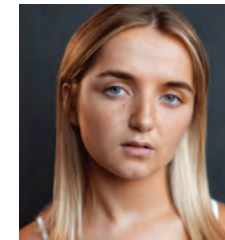
Cynorthwydd Cynllunio
Design Assistant
Yifei Deng

Cynorthwydd Gwisg
Costume Assistant
Xinyue Thea Gou

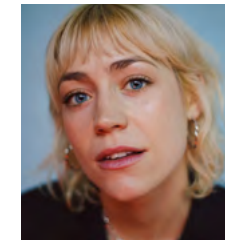
Cynorthwyywyr Golygfaol
Scenic Assistants
Cerys Arrowsmith
Will Dean
Isabel Minnion Craggs
Dominic Shah



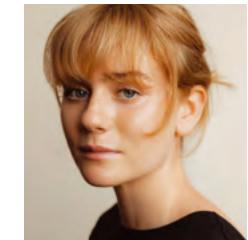
H
Sonny Ashbourne-Serkis



C
Rosie Boore



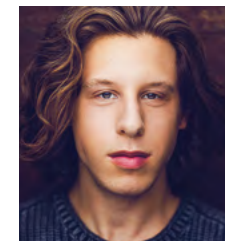
D
Iona Champain



A
Maddie Frutig



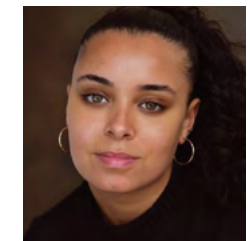
E
Alyson Handley



B
Sam Hyrkin



F
Chris Odulele



G
Mya Pennicott

Adeiladu Golygfaol
Scenic Construction

Archie Adams
Reka Johns
Harry Lewis
Bea Massey
Katherine Towl

Swing Technegydd
Tech Swing
Doug Williams

Is-reolwr Llyfan/Tech
ASM/Tech
Amy Keogh
Alexander Prime

Gan | By
Isley Lynn

Cyfarwyddwr | Director
Debbie Hannan

Cyfarwyddwr Llais | Voice Director
Rhian Cronshaw

Cyfarwyddwr Symudiad
Movement Director
Michael White

Cyfarwyddwr Ymladd
Combat Director
Kevin McCurdy

Rheolwr Cynhyrchu
Production Manager
Dave Roxburgh

Goruchwylwyr Cynhyrchu
Production Supervisors
Tom Naylor & Fran Kirchholtes

Goruchwylwr Goleuo
Lighting Supervisor
Katy Morison

Goruchwylwr Sain | Sound Supervisor
Heddwyn Davies

Goruchwylwr Gwisg
Costume Supervisor
Jenn Jacobs-Evans

Goruchwylwr Cynllunio
Design Supervisor
Brad Lee

Tîm Cynhyrchu
Production Team

Cynllunydd Set a Gwisg
Set & Costume Designer
Amy Marsden

Cynllunydd Goleuo
Lighting Designer
Yasmin Alayoubi

Cynllunydd Sain
Sound Designer
Suzanna Candler

Rheolwr Llwyfan
Stage Manager
Toby Gray

Dirprwy Rheolwr Llwyfan
Deputy Stage Manager
Eve Wengel

Is-Reolwyr Llwyfan
Assistant Stage Managers
Zoe Daniels

Cyfathrebydd Cynllunio
Design Communicator
Will Dean

Cynorthwydd Cynllunio
Design Assistant
MJ Devlin-Larsen

Cynorthwydd Gwisg
Costume Assistant
Yi Anita Chen

Adeiladu Golygfaol
Scenic Construction
Archie Adams

Reka Johns
Harry Lewis
Bea Massey
Katherine Towl

Cynorthwywyr Golygfaol
Scenic Assistants
Cerys Arrowsmith
Will Dean

Isabel Minnion Craggs
Dominic Shah



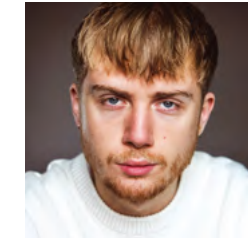
Bitch
Jake Gildred



Shed
Holly Godliman



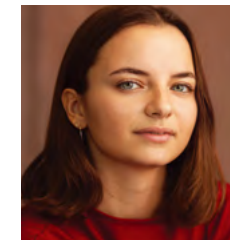
NOOb
Josh Gordon



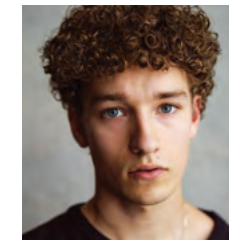
MC
Nathan Kirby



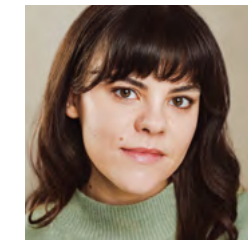
Butch
Cassius Konneh



Ducky
Susi Mauer



Princess
Fred Pearce



BT
Breagh Watson

Swing Technegydd
Tech Swing
Archie White

Technegydd Lleoliad
Venue Technician
Cadi Davage

Technegydd Lleoliad
Cynorthwyol
Assistant Venue Technician
Danny Connaire

Is-reolwr Llyfan/Tech
ASM/Tech
Abbie Belsham
Ellie Smallbone

Diolch i
Thanks To

AW Communications -
Cardiff



Mia
Saskia West

Cyfarwyddwr Mentor
Mentor Director
Roxana Silbert

Cyfarwyddwr Llais | Voice Director
Alice White

Cyfarwyddwr Symudiad
Movement Director
Michael White

Cyfarwyddwr Ymladd
Combat Director
Kevin McCurdy

Rheolwr Cynhyrchu
Production Manager
Dave Roxburgh

Goruchwyliwr Cynhyrchu
Production Supervisor
David Williams

Goruchwyliwr Gwisg
Costume Supervisor
Jenn Jacobs-Evans



FLICKER, NEW VOICES 2023, LLUNIP PHOTO SIMON GOUGH

Trouble in Paradise

gan | by **Stella Elliott-Fortnum**
Rheolwr Llwyfan Technegol
Technical Stage Manager
Leiona Lewis

Over Your Dead Body

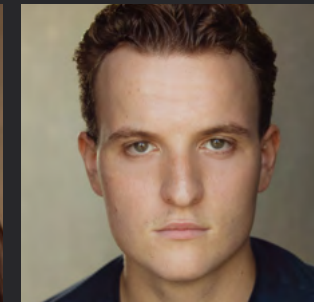
gan | by **Joe Flynn**
Rheolwr Llwyfan Technegol
Technical Stage Manager
Eloise Davis

Knock Knock

gan | by **Liam Whiting**
Rheolwr Llwyfan Technegol
Technical Stage Manager
Evie Thursfield



Stella Elliott-Fortnum



Joe Flynn



Liam Whiting

Tim Cynhyrchu Production Team

Cynhyrchydd Creadigol
Creative Producer
Georgia Meropoulos
Is-Rheolwyr
Llwyfan / Technegwyr
Assistant Stage
Managers / Technicians
Ellie Cumner
Kali Shih

Diolch i Thanks to

Jocelyn Bawler-Harris
Louise Evans
Charlotte Leadley-Brown
Rachel Merritt
Kate Morris
Anton Schilbach
Alan Ortega Borja

Photography by Dylan Ward
The Joke Shop, jokeshop.co.uk
Josh Miles, Sherman Theatre
Vale Domestic
Abuse Services
Sophie Lloyd
Alfie Neil
Lisa Ware
The Team @ USW:
Theo Wilson
Gareth Edwards
Sam Harrendence
Alix Reynolds
Carys Murphy Jones
Paul Appleby



THE SEWING GROUP, LLUNI PHOTO CHRIS LLOYD

Cwmni theatr mewnol Coleg Brenhinol CERDD A Drama Cymru yw Cwmni Richard Burton.

Mae'n cynnwys actorion, rheolwyr llwyfan, cynllunwyr theatr a pherfformwyr theatr gerdd israddedig ac ôl-radd sydd yn eu blwyddyn olaf o hyfforddiant yng Ngholeg Brenhinol Cerdd a Drama Cymru. Fel un o gwmnïau theatr mwyaf toreithiog Cymru, bydd Cwmni Richard Burton yn llwyfannu dauddeg cynhyrchiad bob blwyddyn, yn amrywio o ddramâu clasurol i waith cyfoes, ysgrifennu newydd a theatr gerdd.

The Richard Burton Company is the Royal Welsh College's own in-house theatre company.

It is made up of undergraduate and postgraduate actors, stage managers, theatre designers and musical theatre performers in their final year of training at the Royal Welsh College of Music & Drama. As one of Wales' most prolific repertory companies, the Richard Burton Company stages twenty productions each year ranging from classic plays to contemporary drama, new writing and musical theatre.

Actio a Theatr Gerdd
Acting & Musical Theatre

Vivien Care
 Rhian Cronshaw
 Struan Leslie
 Patricia Logue
 Jonathan Munby
 Pip Reeves
 Simon Reeves
 Tim Richards
 Adam Wachter
 Bidy Wells
 Alice White
 Michael White

Cynhyrchu
Production

Pat Beegan
 Sean Browne
 Rob Clarke
 Zak Clark
 Chris Flavin
 Will Goad
 Robert Graham-White
 Heather Hart
 Ben Hughes
 Matt Jones
 Rhian Jones
 Leigh Kirk-Harris
 James Millar
 Kristian Rhodes
 Mike Robinson
 Nick Woodfine

Uwch Dîm Rheoli
Senior Management Team

Professor Helena Gaunt
 Sean Crowley
 Mark Davies
 Jonathan Munby
 Kevin Price
 Tim Rhys-Evans
 Kate Stokes Davies
 Lucy Stout
 Brian Weir

Cynllunio
Design

Rorie Brophy
 Sean Crowley
 Allie Edge
 Lucy Hall
 Hazel Jewkes
 Laura Martin

Lleoliadau
Venues

Laura Avery
 Eleanor Benson
 Tracey Bishop
 Penny King
 Joanna Kyiet
 Jo Marriott
 Lisa Morris
 Ceri Puckett
 Katy Sinclair-Thomson
 Janet Smith
 Cerys Wyn-Williams

Bwrdd Cyfarwyddwyr
Board of Directors

Professor Helena Gaunt
 (Principal, RWCMD)
 Michael Plaut (Chair)
 Sarah Alexander
 Manon Antoniazzi
 Dr Ben Calvert
 Mario Ferelli
 April Koyejo-Audiger
 Ian Lewis
 Tianyi Lu
 Aled Miles
 Roger Munnings CBE
 Natalie Roe
 David Ruebain
 Helen Sanderson
 Nitin Sawhney CBE

Swyddfa Drama
Drama Office

Emily Binns
 Sian Jones
 Mitzy Wilson

Rheoli Llwyfan
Stage Management

Ian Evans
 Emma Hele
 Liz Isaac
 Daz James
 Kevin Smith

CWMNI RICHARD BURTON COMPANY

I Ddod Cyn Hir Coming Soon

Sweet Charity

Cyfarwyddwr | Director
Hannah Noone

Cyfarwyddwr Cerdd | Musical Director
Barnaby Southgate

Theatr Sherman | Sherman Theatre

23–29 Mai | May

Little Women

Cyfarwyddwr | Director
Rachel Heyburn

Cyfarwyddwr Cerdd | Musical Director
Barnaby Southgate

Theatr Sherman | Sherman Theatre

27 Meh | June–2 Gorff | July

WWW.RWCMD.AC.UK



Os ydych wedi cael eich effeithio gan unrhyw un o'r themâu a archwiliwyd yn ein cynhyrchiadau, mae **Llinell Gymorth y GIG** yn cynnig gwasanaeth gwrando a chymorth cyfrinachol:
Rhadffôn **0800 132 737**
www.callhelpline.org.uk Ar gael 24/7

If you have been affected by any of the themes explored in our productions, the **NHS Helpline** offers a confidential listening and support service:
Freephone **0800 132 737**
www.callhelpline.org.uk Available 24/7