



A FACE IN THE CROWD

CAST

Swing
Jasmin Colangelo
Ensemble
Andrew Coshan
Joey DePalma
Stavros Demetraki
Mel Miller
Olly Dobson
Betty Lou Fleckum
Emily Florence
Ensemble
Howard Gossington
Ensemble
Chris Jenkins
Lonesome Rhodes
Ramin Karimloo
Ensemble
Vicki Lee Taylor
Marcia Jeffries
Anoushka Lucas
Ensemble
Charlotte Riby
Ensemble
Sadie-Jean Shirley
Ensemble
Durone Stokes
Ensemble
Annie Wensak
Swing
Bobby Windebank

BAND

Keyboard MD
Phil Bateman
Drums & Glockenspiel
Tim Goodyer
Clarinet/Tenor Sax
Laura Manship
Double Bass & Bass Guitar
Jo Nichols
Trumpet & Flugelhorn
Seb Philpott
Guitar
Allan Simpson

[For biographies
and headshots
please click here](#)

CREATIVE TEAM

Music and Lyrics by
Elvis Costello
Book by
Sarah Ruhl
Directed by
Kwame Kwei-Armah
Production Designer
Anna Fleischle
Lighting Designer
Jackie Shemesh
Musical Supervisor,
Musical Director
and Arranger
Phil Bateman
Sound Designer
Emma Laxton
Choreographer
Lizzi Gee
Production Dramaturg
Teunkie Van Der Sluijs
Orchestrator
Will Stuart
Assistant Choreographer
Jasmin Colangelo
Associate Musical Director
Ben McQuigg
Rehearsal Associate
Musical Director
Matthew Jackson,
Caitlin Morgan
Associate Production
Designer
Angelica Rush
Associate Costume Designer
and Costume Supervisor
Olivia Ward
Associate Sound Designer
Kyle Macpherson
Intimacy and Fight Director
Yarit Dor

Voice and Dialect Coach
Hazel Holder,
Rebecca Clark Carey
Orchestral Manager
David Gallagher
Casting Director
Heather Basten CDG
Jerwood Assistant Director
Aaliyah McKay
Jerwood Assistant Trainee
Director
Elodie Wilson
Assistant Musical Director
Luke Bacchus
Casting Assistant
Iman Wilson
Jnr Casting Assistant
Joyce Lulendo
Casting Assistant
Abby Sethu
Casting Reader
Haley Bishop
Keyboard Programmer
Lucy Baker-Swinburn
Original Arrangements
Rob Mathes
Based on the original story
and screenplay by
Budd Schulberg and the
Warner Bros. film

PRODUCTION TEAM

Company Stage Manager
Lizzie Chapman
Deputy Stage Manager
Devika Ramcharan
Assistant Stage Manager
and Book Cover
Kate Stockwell
Production Manager
Ryan Watson
Deputy Production Manager
Chloe Stally-Gibson
Props Supervisor
Charlotte King
Prop Maker
Simon A Martin
Prop Graphics
Toby Coulton
Props Seamstresses
Jessamine Green
Nenni Alenius
Costume Seamstress
Eve Kann
Gabby Vorley
Laila Jam
Hair, Wigs and
Make-Up Supervisor
Suzanne Scotcher
Assistant Costume Supervisor
Finlay Forbes-Gower
Costume Maker
Ashley Cherry
Breakdown Artist
Rebecca Lesley
Dye and Breakdown Artist
Gabrielle Firth
Running Wardrobe Manager
Kara Richardson

Dresser
Kate Levy
Running WHAM Manager
Caz Walters
Stage Crew
Theo Corrance
Stage Crew
Jordan Haugh
LX Programmer
Stephen Settle
LX Programmer
Luca Panetta
LX Operator
Luke Jackson
Follow Spot Operators
Ghoti Fisher
Rocky Chambers
Joe Doody
Sound 1
Heather Knott
Sound 2
Wilkie Morrison
Captioning
Miranda Yates
BSL interpreter
Sumayya Si-Tayeb
Audio Description
Miranda Yates, Eleanor
Margolies
LX Hires
White Light
Sound Hires
Orbital
Set Builder
Footprint Scenery

SPECIAL THANKS

Adam Kenwright, Brian Zeilinger, Scott Zeilinger, Scott Landis, Hatley Print,
SW Fabric FX, Alessa Lewis, Amy Gelnar

PUBLIC SUPPORT



Supported using public funding by
**ARTS COUNCIL
ENGLAND**



SEASON SUPPORT

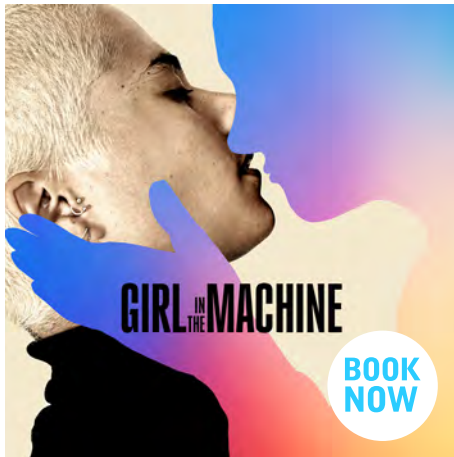


THE BLACK HEART FOUNDATION



WE GRATEFULLY ACKNOWLEDGE IAN BURFORD & ALEC CANNELL FOR GENEROUSLY SUPPORTING THE YOUNG VIC'S MISSION

YOUNG VIC – COMING SOON



GIRL IN THE MACHINE

WED 16 – SAT 26 OCT

Polly loves Rowen but lately, that hasn't felt like enough. Then Rowen brings home the Black Box, with its promises to cure depression, and in a flick of a switch changes everything. As Polly becomes more distant from the person she planned to share her life with, will her love for Rowen be enough to resist the draw of eternal bliss that the Black Box offers?



THE LITTLE FOXES

MON 2 DEC – SAT 8 FEB

After a lifetime spent watching her brothers grow rich, Regina Hubbard (**Anne-Marie Duff**) has had enough of standing around. When a businessman offers the family the prospect of untold wealth and power, a sequence of events unfolds that sets brother against brother, father against son and Regina against the whole pack of them.

UPCOMING ACCESS PERFORMANCES

Access concession tickets and seats reserved for accessible performances are now available to book online. [Visit our Access for All page for more information about booking access tickets online.](#)

GIRL IN THE MACHINE

Captioned Performance:

Wed 23 Oct, 7.45pm

BSL Performance:

Thu 24 Oct, 7.45pm

Audio Described Performance:

Fri 25 Oct, 7.45pm

THE LITTLE FOXES

Captioned Performances:

Tue 17 Dec, 7:30pm and Sat 4 Jan, 2:30pm

Audio Described Performances:

Thu 19 Dec, 7:30pm and Sat 18 Jan, 2:30pm

BSL Performance:

Tue 7 Jan, 7:30pm

Sensory Adapted Performance:

Thu 9 Jan, 7:30pm

Relaxed Performances:

Sat 11 Jan, 2:30pm and Thu 16 Jan, 7:30pm

PUNCH

Audio Described Performances:

Fri 14 Mar, 7.30pm & Sat 22 Mar, 2.30pm.

Captioned Performances:

Mon 17 Mar, 7.30pm & Wed 26 Mar, 2.30pm

BSL Performance:

Tue 18 Mar, 7.30pm

Relaxed Performances:

Mon 17 Mar, 7.30pm, Sat 29 Mar, 2:30pm.

Sensory Adapted Performance:

Fri 28 March, 7:30pm.

JOIN US FOR A BITE AT THE CUT BAR

[PRE-ORDER YOUR DRINKS HERE](#)



Young Vic Membership

Our Soul Mates play a vital role in supporting our productions, our artists and communities whilst enjoying amazing benefits including priority booking and rare behind-the-scenes experiences.

Become a Soul Mate today to get even closer to the action.

Join us today

Or email us at Soulmates@youngvic.org

Registered charity number: 268876

REHEARSAL IMAGES

